

Photoelectric switches

CdS-LC-SM black



black, Part No. 93016

Product Information

- Photoelectric switch for automatic switching of lights
- LED adjustment aid (without delay) for adjustment of the switch-on threshold
- Light value and activation/deactivation delay may be set from the outside using the potentiometer

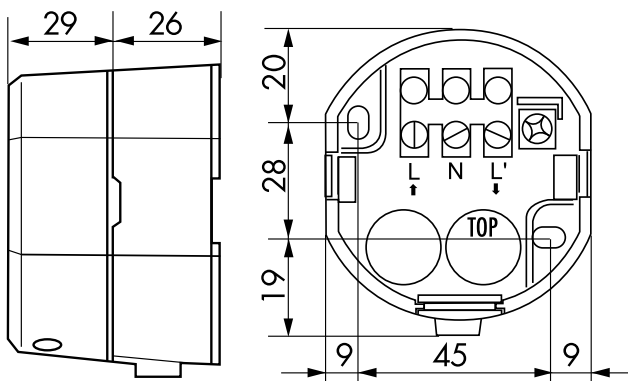
Technical Data

Voltage:	110 - 240 V AC 50 / 60 Hz
Dimensions:	55 x 63 x 68 mm
Power consumption:	approx. 0.5 W
Degree / class of protection:	IP54 / Class II
Ambient temperature:	-25 °C to +50 °C
Housing:	Polycarbonate, UV-resistant
Operation mode:	Automatic mode (Switch-on threshold 20 Lux, Switch-on delay 10 s, Switch-off delay 40 s)
Connections and wires:	for one-wires 0.25 - 2.5 mm ²
Switching power:	2300 W, cos φ = 1 1150 VA, cos φ = 0.5
Type of contact:	μ -contact, NO contact
Switch-on delay:	10 s

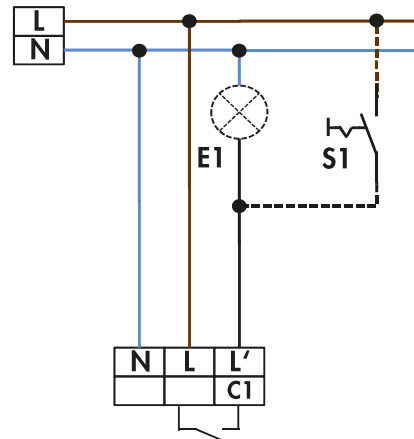
Switch-off delay: 40 s
Switch-on threshold: 20 - 1000 Lux

Description

Description	Colour	Part number	EAN number
CdS-LC-SM black	black	93016	4007529930166



Dimensions



Wiring diagram

© 2018 B.E.G. Brück Electronic GmbH