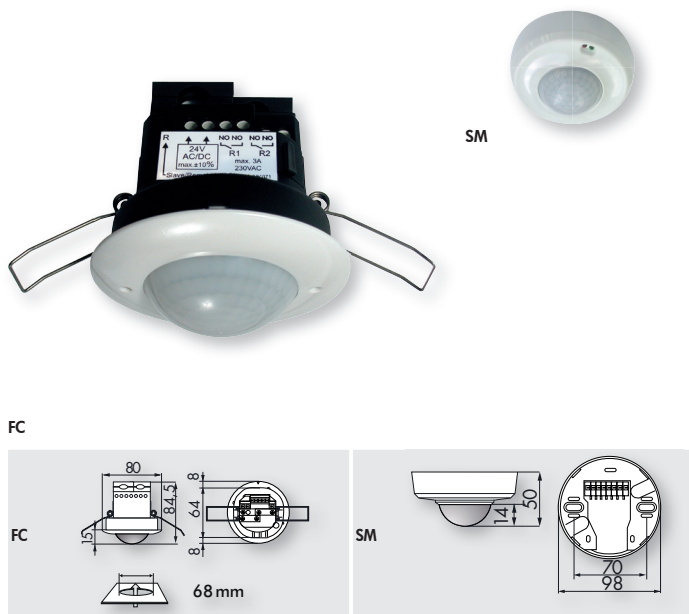


## PD2-M-2C-11-48V-SM/-FC

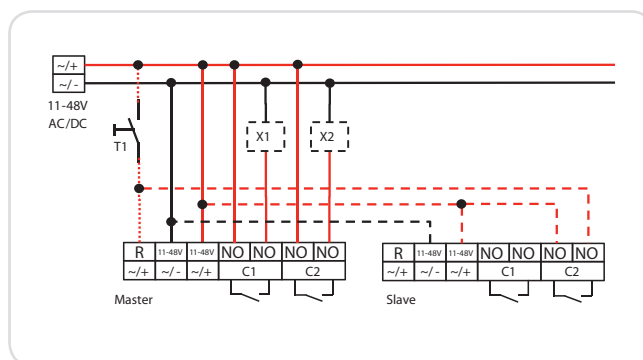
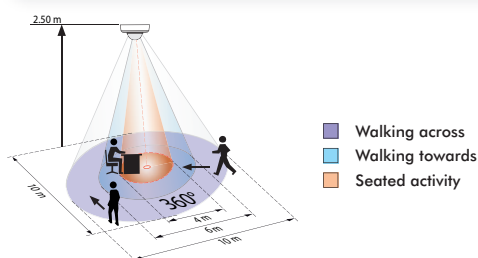


### PRODUCT INFORMATION

- Occupancy detector with operating voltage of 11-48 V
- Two potential-free channels
- For channel 1, output of brightness-dependent resistance value also available, for additional analogue connection
- Can be used as either Master or Slave
- Push button manual switching available
- Additional functions can be set via optional remote control

### TECHNICAL DATA

- 11 - 48 V AC, DC
- < 1W
- 360°
- Ø 10 m across
- Ø 6 m towards
- Ø 4 m seated
- IP SM= IP20 FC= IP20 / Class II
- Housing UV- and shock resistant polycarbonate
- IR-PD-2C, IR-PD-Mini
- Channel 1 to Channel 2 (control the lighting potential free)**
- 3A-Version:** 3 A cos φ = 1
- RR-Version:** with Reed-Relais, 100 mA, cosφ = 1
- Channel 1:** 15 s - 30 min or pulse
- Channel 2:** Alarm pulse, pulse or 5 - 120 min
- 10 - 2000 Lux



Description	Colour	Part number
PD2-M-2C-11-48V-3A-FC	white	92164
PD2-M-2C-11-48V-RR-FC	white	92306
PD2-M-2C-11-48V-3A-SM	white	92154
PD2-M-2C-11-48V-RR-SM	white	92305
<b>Accessory (optional)</b>		
IR-PD-2C	grey	92475
IR-PD-Mini	grey	92159
Wire basket BSK (Ø 200 x 100)	white	92199
Socket IP54 for PD2- and PD4-SM	white	92161