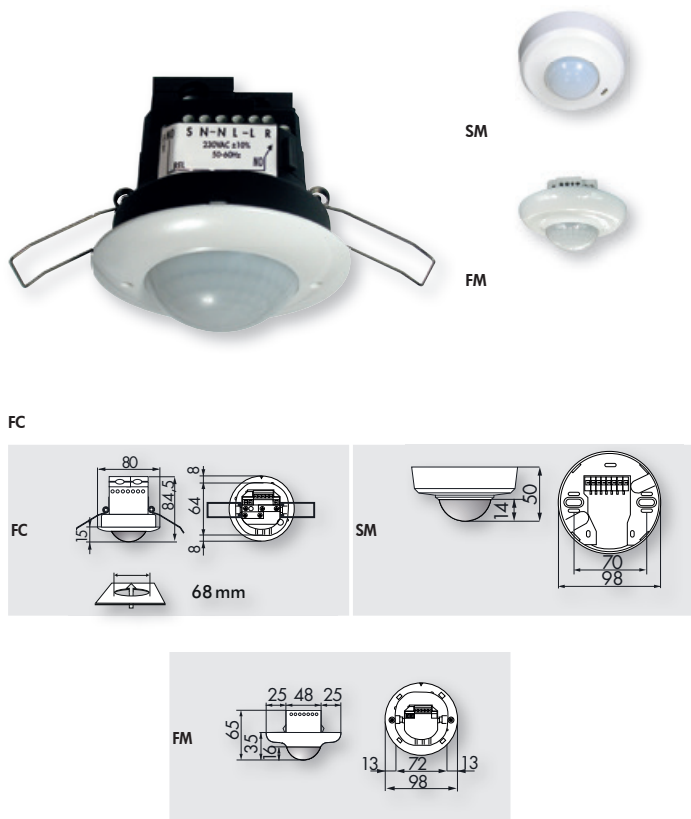


## PD2-M-2C-SM/-FC/-FM

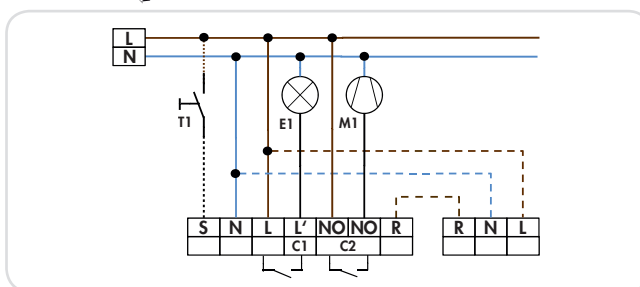
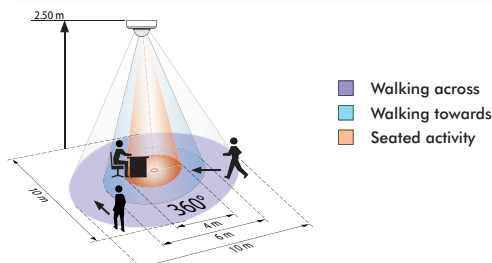


### **i** PRODUCT INFORMATION

- Occupancy detector with circular detection area
- One switching channel for operating the light
- One potential-free contact for HVAC
- Installation as Master
- Detection area can be extended with Slave units
- Push button manual switching available
- Alarm pulse: protected triggering only if there are three movements recognised within 9 seconds
- Additional functions can be set via optional remote control

### ■ TECHNICAL DATA

- ⚡ 110-240 V AC , 50 / 60 Hz
- ☂ 360°
- ⊘ 10 m across
- ⊘ 6 m towards
- ⊘ 4 m seated
- IP □ SM= IP20 FC= IP20 FM= IP20 / Class II
- 🌡 -25 °C to +50 °C
- 📦 Housing UV- and shock resistant polycarbonate
- 📡 IR-PD-2C, IR-PD-Mini
- Channel 1 (control the lighting)**
- ⚡ 2300 W,  $\cos \varphi = 1$
- ⚡ 1150 VA,  $\cos \varphi = 0.5$
- 🕒 15 s - 30 min or pulse
- 🌙 10 - 2000 Lux
- Channel 2 (control HVAC potential free)**
- ⚡ Dry contact type NO 3A, 230 V,  $\cos \varphi = 1$
- 🕒 Alarm pulse, pulse or 5 - 120 min



| Description                     | Colour | Part number |
|---------------------------------|--------|-------------|
| PD2-M-2C-FC                     | white  | 92165       |
| PD2-M-2C-SM                     | white  | 92150       |
| PD2-M-2C-FM                     | white  | 92155       |
| <b>Accessory (optional)</b>     |        |             |
| IR-PD-2C                        | grey   | 92475       |
| IR-PD-Mini                      | grey   | 92159       |
| Wire basket BSK (Ø 200 x 100)   | white  | 92199       |
| Socket IP54 for PD2- and PD4-SM | white  | 92161       |